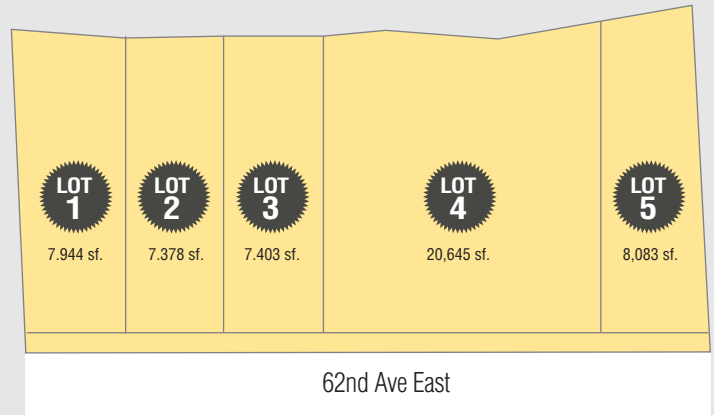


# Summit Springs

A COLLECTION OF RAMBLER AND 2-STORY HOMES PUYALLUP, WASHINGTON



LOT#	ADDRESS	SIZE	FEATURES	PRICE	COMPLETE DATE	MLS#	STATUS
1	11636 62nd Ave E . Puyallup	1,815 sf.	Rambler / 3 Beds, 2 Baths	\$749,950	Move-In Ready	1978968	100%
2	11632 62nd Ave E . Puyallup	1,815 sf.	Rambler / 3 Beds, 2 Baths	\$749,950	Dec. 2022	1978976	90%
3	11628 62nd Ave E . Puyallup	2,537 sf.	2-Story / 4 Beds, 3 Baths	\$799,950	Dec. 2022	1978983	80%
4	11614 62nd Ave E . Puyallup	2,088 sf.	Rambler / 3 Beds, 2 Baths	\$649,950	Move-In Ready	1888055	Remodeled
5	11606 62nd Ave E . Puyallup	2,804 sf.	2-Story / 3 Beds, 2 Baths	\$819,950	Jan. 2023	1978987	60%

## THE HIGHLIGHTS

- **1,800 to 2,800 Square Feet Total Living**
- 1 and 2 Story Single Family Homes
- High Ceilings
- Covered Back Porches
- Fully Tiled Primary Shower
- Large Backyard Spaces with Additional Buffer
- Gas Fireplace
- Quartz Countertops and Stainless Steel Kitchen Appliances
- Walk-In Closet off of Primary

### FOR SALES INFORMATION



**George Sampson**  
 (253) 722-3736  
 Pacific Ridge Real Estate  
 george@pacificridgere.com



**Rob Tamaela** *President & Designated Broker*

(206) 550-1096  
 rob@tamaelamortgage.com



 **NMLS# 67846, NMLS Originator # 68714**

LAST UPDATED: October 20, 2022



Photo renderings are for illustrative purposes only. Builder reserves the right to make modifications and changes to prices, floorplans, interior/exterior design, materials and specifications at any time without prior notice and/or obligation.